

# WiFiBO

## WiFi Smart Air Conditioner Remote Control

User's Manual

QUNDA Control Technology (Jiangsu) Co., Ltd.  
No.888 LongQiao Road, WuJiang District,  
SuZhou, China  
Tel: 0086-512-65300272  
Fax: 0086-512-65300292  
E-mail: qunda@qunda.com  
<http://www.qunda.com>

Patent products  
counterfeiting not allowed

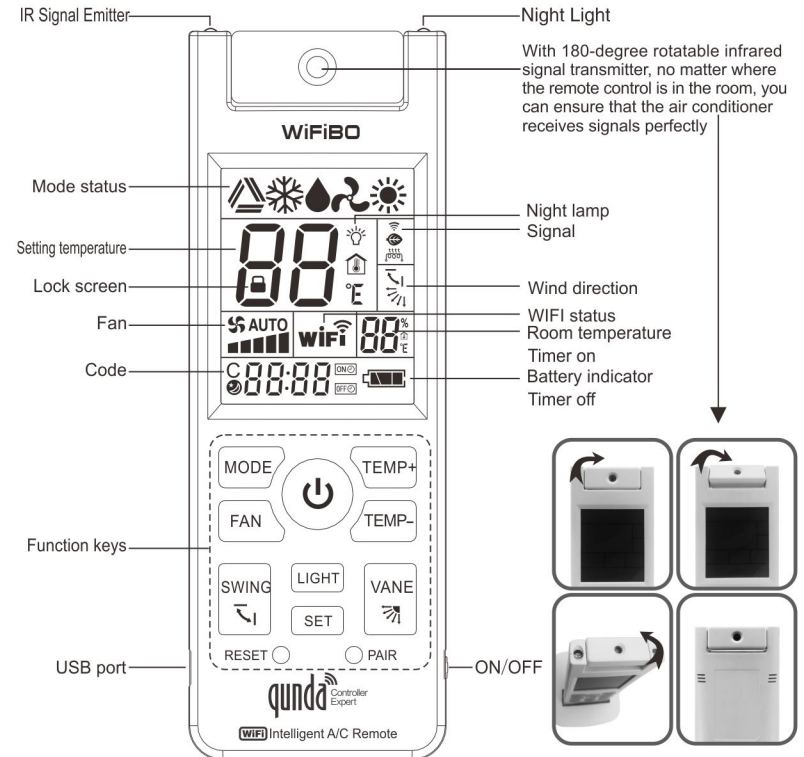


QUNDA-Control & Remote Expert  
[www.qunda.com](http://www.qunda.com)

## Preface

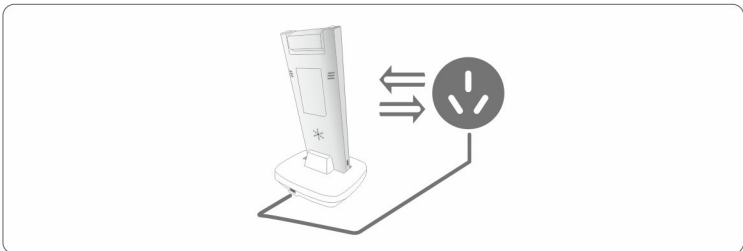
Dear user,  
Thank you for choosing WiFiBO WiFi smart air conditioner remote control. WiFiBO is an air conditioner remote control with WiFi function that can control almost 99% of available air conditioner models, and is developed specifically to meet market requirements. You can remotely control your air conditioners through your smart phone (download APP) whenever and wherever you are. With this WiFi remote control, you can completely control your air conditioner both manually with the remote and remotely via the app - a great convenience for your daily life. With a 180-degree rotatable infrared signal transmitter, no matter where the remote control is in the room, you can ensure that the air conditioner receives signals perfectly, giving you perfect reliable. With beautiful appearance, smooth lines, made to be very durable & long-lasting, the remote has a built-in rechargeable eco-friendly lithium battery. WiFiBO is the best possible choice to upgrade your standard air conditioner remote control to a smart control.

## Product diagram and description

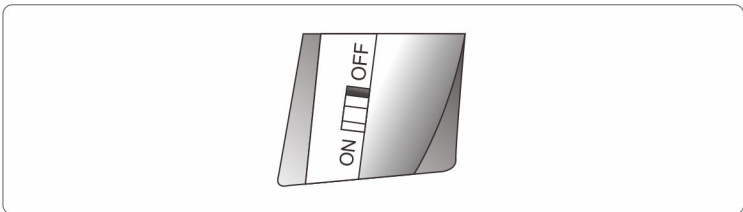


## First use

1. Before you use the remote control for the first time, please make sure to fully charge the battery. The charging voltage is 5V, if you exceed this the remote control will be permanently damaged.



2. When the remote is on the charger, if there is no display on the screen, turn the remote "ON" using the side switch.



## Remote control setting

Set by remote control manually itself

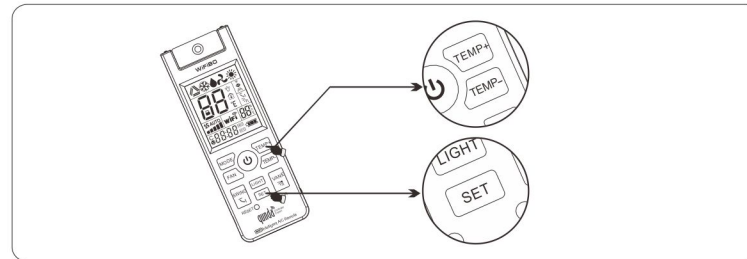
### 1. Brand code setting

1) Find the brand of your air conditioner from the "Brand code list". A brand may have many possible codes, please use the first code, if it does not work, then try the second code, and continue as shown in the next step until you find a code that works. For example: GREE, try "0512" first, if does not work, then try "0513" and so on.

GOLDSTAR	0201, 0466-0469, 0713, 0980
GREE	0309-0316, 0398, 0399, 0482, 0512, 0513
GUOQIAO	0244, 0291, 0803
HAIER	0266-0272, 0453-0455, 0538, 0539, 0966
HISENSE	0332-0335, 0505-0506, 0517, 0844
HITACHI	0118-0126, 0605-0607, 1012, 1015
HUABAO	0336-0344, 0850

0512

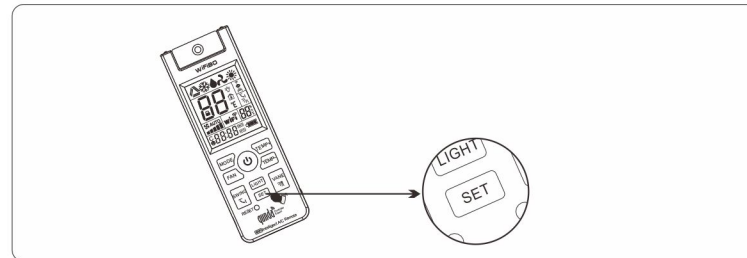
2) Pressing "SET" key, you can see the code flashing on the LCD screen. Press the "TEMP+" or "TEMP-" key until the required brand code is displayed. Then press "SET" key and the brand code stops flashing. Test whether the remote control buttons work properly or not. If all the buttons work then the pairing is completed. Otherwise, repeat the above steps with further codes until all buttons work satisfactorily.



### 2. Auto-search setting

If you do not know the brand of your air conditioner or you can't find the brand on the brand code list, please do the following:

1) Aim the remote control at the air conditioner and then, press and hold the "SET" key for 5 seconds, and then release it. The remote control will then go into automatic search status and will emit signals continuously. The code number on the screen will flash and increases. When the air conditioner receives the signal and makes a sound, quickly press any key on the remote control to stop the count and confirm the code.



2) Then use the remote to turning on the air conditioner, test whether all the other buttons work or not. If some buttons or functions don't work satisfactorily, repeat the above steps until you find the correct pairing code and all functions work as required work.

## Download and install APP

### 1. How to Download the APP

**Method 1:** Scan the QR code on the right and start to download "Smart Life".

**Method 2:** IOS users enter APP STORE, Android users enter GOOGLE PLAY, then search "Smart Life" and start to download it.

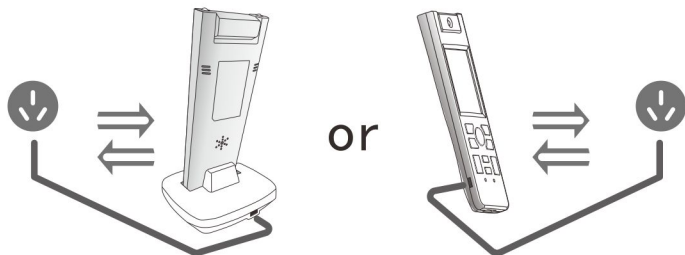


## 2. Create a new account

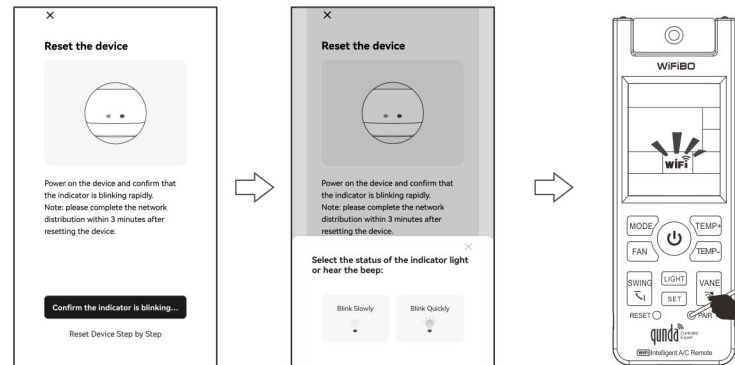
If it's your first time using WiFiBO, please follow the prompt and create a new account.

## 3. Add the device

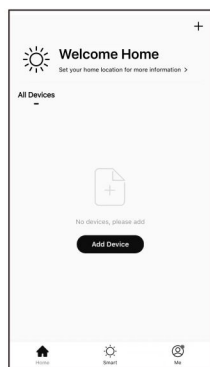
**Step 1:** Ensure the remote control is connected to a 5V power supply. (Connect the equipped USB cable to the remote control or connect the remote to the 5V charger)



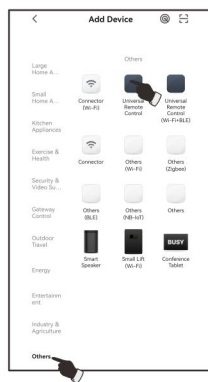
**Step 4:** Use a slim stick to press the "PAIR" button on the remote, then "WiFi" icon flashes.



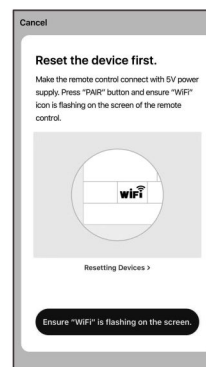
**Step 2:** Click "Add device".



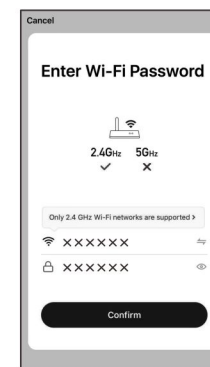
**Step 3:** Click "Universal Remote Control".



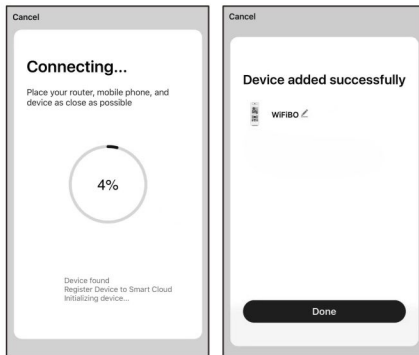
**Step 5:** Click ensure "WiFi" is flashing on the screen.



**Step 6:** Enter the password for your WiFi network.



## 4. Pairing Completed



5. Successfully paired, enter the interface of remote control. You can use it to control your air conditioner now.



**Tips:** During pairing, when you press the "PAIR" button the "WiFi" icon will flash. This indicates the remote has entered pairing mode.

## 6. If during setup you see the timeout prompt, please check as the following steps.

- 1) Check if your mobile phone has successfully connected to the router.
- 2) Check if your router is connected to WiFi.
- 3) Check if the entered password is correct.
- 4) Check if the remote control has been connected to a 5V power supply.
- 5) Check if the remote control successfully enters pairing mode.
- 6) If setup still fails, please start the process again.

## 7. How to confirm the remote control has connected to WiFi?

1. When the screen of remote control displays a solid "WiFi" icon, it means the pairing is successful and the APP can be used.
2. When the "WiFi" symbol on the screen flashes, it means the router isn't connected to WiFi, please check your router.
3. When the screen of remote control doesn't display the "WiFi" symbol at all, it means that the pairing has failed.

## Switch between C&F

1. Simultaneously press and hold **TEMP-** and **TEMP+** for 2sec to switch between °C&°F.
2. Reset.

**Note:** After switching between C&F, the remote control needs to be paired again to reset the APP.

## Light function

There is a "Light" button on the remote control, press it and it will turn on the LED torch. Press the button again, to turn the LED torch off.

## Pairing code lock function (Anti tamper lock)

1. Simultaneously press and hold **MODE** and **TEMP-** for 2 sec to switch the pairing code lock on or on/off lock.
2. Once the lock function is on, a user will not be able to alter the brand code pairing. All other functions keep working as normal. This function prevents accidentally unpairing of the remote.

## Recharge and wiring

1. The remote control is supplied with a recharging wire plug. To power the plug into a 5V supply. Set the remote control on the base to charge. You can also connect the remote control directly to the USB cable for charging.
2. To activate the WiFi function, please ensure the remote is either connected directly to the USB or sitting on its base. When using the remote control without WiFi function, there is no need to connect it to 5V power supply.
3. The screen will display when the remote is charging. The icon flashes to indicate the remote is charging. If the battery is fully charged, the screen will display the full battery and icon which will stop flashing.



## FAQ

### Why does the APP show that the remote is offline?

Please check that the remote control is connected to the power supply, and check if the router connected to WiFi.

### Forget APP login password?

Click "forgot password" and then enter the registered email address or mobile phone number. The system will send you a verification code. Enter it to reset your password.

### How many accounts can be linked with one remote at the same time?

You must pair again if you change user account, router or network.

## Attention

- Regarding the "ON/OFF" button is on the side of the remote control. If the remote control is not going to be used for an extended period, you should disconnect from any power supply and switch the power button to OFF.
- After changing the router or restoring the remote to factory settings, please follow the steps to pair the remote again.
- The remote control has a built-in lithium battery, please don't disassemble, or dispose of by burning.
- Please keep far away from heat and fire source when the remote control is charging. Don't allow child to use the charger independently, in case of potential safety risk.

## Specification

- Power supply: 3.7V lithium battery or 5V USB charger
- Control distance:  $\geq 8M$
- Dimensions: 170\*60\*18mm
- Weight: 113g(without base)

Brand	Code	Brand	Code
ACSON	0234、0468	KLIMATAIR	0225、0226、0452、0738
ACTRON AIR	0573	KOLIN	0416-0418、0929
AGER/AGREE	0489、0785、0107、0108	KONKA	0397、0457-0459、0909
AIRWELL	0529、0555-0558	LENNOX	0017、0260-0265、0435、0301
AITE	0002、0012、0292、0326	LEVANTE	0106
AKIRA	0310、0311	LG	0197-0200、0514、0534、0572、0634、1026
ALPN	0252、0253、0764、0765	LIANGYU	0233、0451、0963
AMCOR	0050、0246、0302、0449	LITTLE DUCK	0015-0020、0527、0530、0532
AMICO	0555-0558	LITTLE SWAN	0434、0477、0516、0524、0946
ARENA	0261、0212、0229	LOREN-SEBO	0285、0471、0472、0983
ARISTON	0281、0265	LUXARE	0297
ARLEC	0202	MCQUAY	0234-0237、0465、0468、0472、0567、0587、0977
AUCMA	0288-0296、0302、0462、0801、0974	MI TV	0391
ALUSSE ARIARD	0297、0282、0287	MICOM	0415、0927
AUX	0297-0300、0451、0474、0475、0599、0809、0963	MIDEA	0260-0265、0526、0772、0776
BANSHEN	0264、0776	MISAKAE	0234-0237
BLUESTAR	0261、0265	MISTRAL	0237
BLUEWAY	0300	MITSUBISHI	0001-0045、0476-0479、0522、0523、0552、0553、0568、0582、1078
BOERKA	0383、0434、0436、0437、0895	NEC NATIONAL	0138-0154、0200
BRVAS	0107	NIKKO	0462、0519
CARRIER	0203-0209、0235、0456-0458、0468、0563-0565、0590-0592	NISO	0013、0016
CELESTIAL	0307	NORITZ	0431、0943
CHANGHONG	0301-0308、0046、0813、0817、0819	OGENERAL	0127-0137、0464、0552-0554
CHANGLING	0002、0012、0119、0191、0192、0261、0298、0369、0630-0633	OMEGA	0559
CHIGO	0379-0382、0444-0447、0489、0515、0610、0261、0892	OMNI	0146、0262
CHOFU	0184-0187、0699	PANASONIC	0138-0154、0483、0490-0492、0651、0995
CHUNLAN	0345-0350、0450、0453、0545-0546、0962	National	
CLIMA VENETA	0572	PANDA	0378、0890
CONIA	0297-0300、0349、0570、0571	PHILCO	0210、0211、0487、0488、1000
CONROWA	0377、0889	PILOT	0591
CONSUL	0463、0975	POLAR ICE	0571
COOL PARTS GC	0416-0418、0002、0456	PROTON	0421-0423、0934
COOLINE	0187、0206	RAYBO	0362-0367、0876
CORONA	0155-0163、0459、0670	RHOSS	0484
COUNTRY AIR	0560	ROWA	0369、0438、0439、0494、0527、0531、0881
DAEWOO	0203-0209、0406、0717、0918	Sabro	0435、0506-0508、1018
DAIKIN	0171-0183、0566、0567、0574、0577、0583、0683、0695	SACON	0002、0288
DEC/DHL	0504、0592	SAUO DENKI	0212-0215、0724
DeLonghi	0232、0482、0484	SAMPO	0424-0426、0938
DERBYDINCHI	0311、0289、0400	SAMSUNG	0188-0196、0516、0518、0700、0707
DL	0302	SANYO	0046-0095、0529、0530、0558、0559、0606
DOCTOR	0221、0449、0499、0733、0961	SAST	0002、0012
DONGBAO	0219、0355-0361、0867、0870	SASUKI	0254、0470、0982
DONGXINBAO	0413、0925	SENSOR	0046、0071
EELCO	0555-0558	SHANGLING	0384-0389、0444、0445、0956
ELECTRA	0555-0558	SHANXING	0392、0449、0961
Electrolux	0216-0220、0268、0300、0534、0569、0729、0732	SHARP	0096-0105、0525、0542、0616
EMALAIR	0127-0135、0553、0556、0558	SHENGFENG	0376、0480、0992
FEDDERS	0498、0499、0500、0528	SHINCO	0351-0354、0454-0456、0866
FERROLI	0589	SHUAIKANG	0002、0288、0800
FRESTECH	0277、0485、0485-0487、0519、0520、0534、0048、0281、0448、0789	SHUJIANGLU	0376、0404-0407、0480、0992
FUJITA/FUJIARE	0265、0297	Skyworth	0359-0361、1027
FUJITSU	0127-0137、0464、0552-0554、0118、0641、0976	SONGGE	0428、0429、0941
FUNAI	0430、0481、0942、0993	SOVA	0409、0410、0921
FUNAI/FUJIN	0430、0481、0802、0942、0002	STARIGHT-ARCON	0283
GALANZ	0371、0372、0521、0534、0883	STARWAY	0345-0350、0450、0453、0545-0546
GE	0047	SUMMER	0427、0939
GEER	0002、0012	SUNDURG	0257、0505、1017
General	0127-0137、0464、0552-0554、0639、0976	SWAN	0434、0477、0516、0524、0946
GLEE	0313、0900	TADIRAN	0246-0251、0591、0758、0762
GOLDSTAR	0201、0466-0469、0713、0980	TATUNG	0419、0420、0932
GREE	0309-0316、0398、0399、0482、0490、0512、0513、0591	TCL	0246、0273-0281、0468、0476、0483、0534、0570、0786、0793
GUOIAO	0244、0291、0803	TECO	0256、0473-0475、0768、0967
HAIER	0286-0272、0346、0453-0455、0538、0539、0966	TIANDI	0415、0927
HELLER-HOFFWEL	0107、0282、0289、0292、0299	TIANDI/MCOM	0415、0131、0017
HICOM(HIKANG)	0016、0368、0441-0443、0207、0953	TITANIUM	0339
HISENSE	0332-0335、0505-0506、0517、0844	TOSHIBA	0107-0117、0479、0489、0561、0562、0629、1001
HITACHI	0118-0126、0605-0607、1012、1015	TOYO	0002、0012
HOFFWELL	0811	TRANE	0227-0232、0512、0595、0739、0744
HOMEMAKERS	0091、0297-0300、0451、0810	UNI-AIR	0222-0224、0450、0735、0962
HUABAO	0336-0344、0850	VIDEOCON	0002、0484
HUAKE	0408、0920	VOLTAS	0002、0197、0260、0261、0265、0498
HUALING	0317-0325、0452、0207、0234、0261、0523、0831	WanBao	0138-0154、0483、0666、0995
HUAMEI	0402、0460-0465、0972	WEATHERMAKER	0203-0208、0235、0456-0458、0468、0482-0486、0563-0565、0590-0592
HUIFENG	0370、0882	WEILI	0393-0396、0908
HYUNDAI	0012、0202、0297、0345、0433、0466、0480、0555、0714	Whirlpool	0164-0170、0481、0489、0502、0505、0506、0681、1014
JDC	0373、0440、0952	WINIA	0481、0550、0993
JBS	0202、0273	XILENG	0411、0412、0923
JET-AIR/JBS	0169、0202	XINLE	0297、0298、0400、0401、0913
JIANGNAN	0432、0944	YANGZI(YAIR)	0403、0915
JINDA	0414、0926	YINYAN	0258、0259、0330-0331、0326-0331、0478、0303、0364、0381、0638
JINDONG	0219、0355、0389-0391、0446-0448、0959	YORK	0107、0235、0238-0243、0468、0501-0502、0576、0573、0590-0592、0751
JOHNSON	0492、0555-0558、0757	YUETU	0002、0534
KANGSLI	0374、0375、0887	ZhenBao	0127-0137、0464
KELON	0282-0287、0416-0418、0473、0485-0488、0501、0534		
KELVINATOR	0151、0197、0203、0107		